

FITTING INSTRUCTION

Clamp mark in acc. with		Cables joining
ISO	PN	
1	L	Left directional lights
2	+	Rear fog lights
3	31	Ground
4	R	Right directional lights
5	58R	Right side parking lights
6	54	Stoplights
7	58L	Left side parking lights

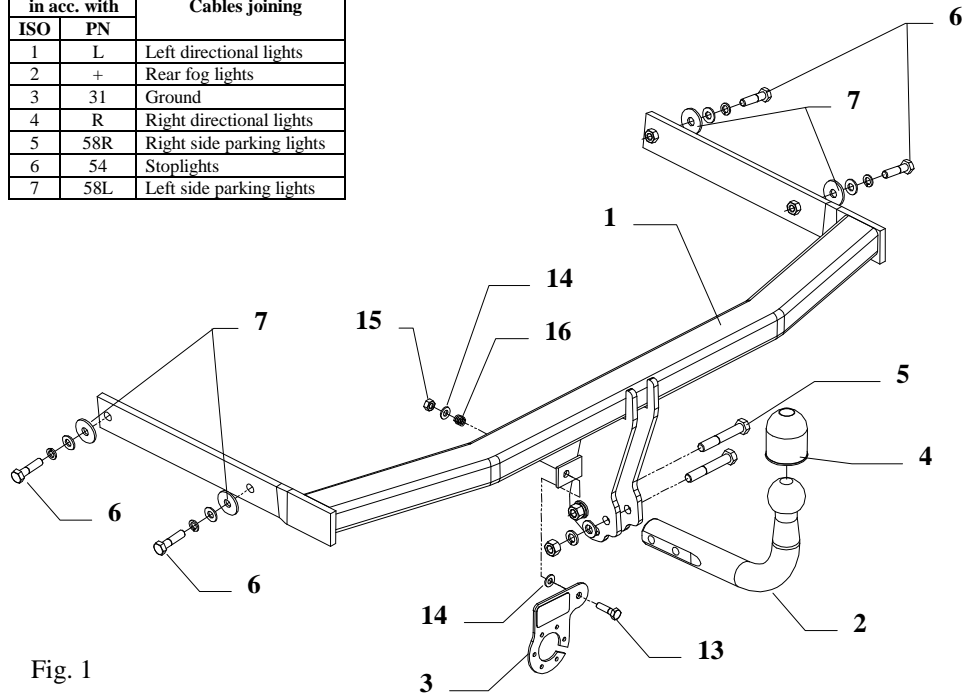


Fig. 1

This towbar is designed to assembly in following car:
SKODA OCTAVIA II, catalogue no. **H 14**, produced since 2004 and is prepared to tow trailers max total weight **1600 kg** and max vertical load **75 kg**.

From manufacturer

Thank you for buying our product. Their reliability has been confirmed in many tests. Reliability of towbar depends also on correct assembly and right exploit. For this reasons we kindly ask to read carefully this instruction and apply to hints.

The towbar should be install in points described by a car producer.

Fitting instructions

1. Remove the rear bumper and a metal support of bumper (this metal part will not be used any more).
2. Find two holes at the bottom of the car next to a chassis under the conservation layer.
3. Slide the bar (pos. 1) into the chassis and then fix with M10x40mm bolts (pos. 6) with big washers $\varnothing 35 \times \varnothing 12 \times 3 \text{mm}$ (pos. 7) from the towbar accessories.
4. Tighten all nuts and bolts according the torque shown in the table.
5. Position the ball of towbar fix with M12x75mm bolts (pos. 5) from the towbar accessories.
6. Fix the socket plate (pos. 3) as showed on the drawing.
7. Cut the bumper according to figure 2 and mount it to the car.
8. Connect the electric wires according to the instructions of the car. (Recommend to make at authorized service station)
9. Complete the paint cover of towbar (during the mounting paint cover could be destroyed).

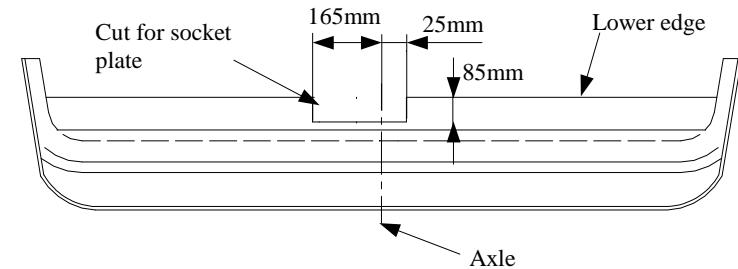


Fig. 2 Bumper cut out (top view)

Torque settings for nuts and bolts (8,8):	
M 8 - 25 Nm	M 10 - 55 Nm
M 12 - 85 Nm	M 14 - 135 Nm

NOTE

After install the towbar you should get adequate note in registration book (at authorised service station).The car should be equipped with:

- Indicators
- Tow mirrors

After 1000km check all bolts and nuts. The ball of towbar must be always kept clear and conserve with a grease.

Towbar accessories:

Pos. 1 Name: Body Quantity: 1	Pos. 5 Name: Bolt 8,8 B Quantity: 2 Dim.: M12x75mm	Pos. 10 Name: Plain washer Quantity: 4 Dim.: ϕ 10,5 mm	Pos. 15 Name: Nut 8 B Quantity: 1 Dim.: M 8
Pos. 2 Name: Tow-ball Quantity: 1	Pos. 6 Name: Bolt 8,8 B Quantity: 4 Dim.: M10x40mm	Pos. 11 Name: Spring washer Quantity: 2 Dim.: ϕ 12,2 mm	Pos. 16 Name: Spring Quantity: 1
Pos. 3 Name: Socket plate Quantity: 1	Pos. 7 Name: Washer Quantity: 4 Dim.: ϕ 35x ϕ 12x3mm	Pos. 12 Name: Spring washer Quantity: 4 Dim.: ϕ 10,2 mm	
Pos. 4 Name: Ball cover Quantity: 1	Pos. 8 Name: Nut 8 B Quantity: 2 Dim.: M12	Pos. 13 Name: Bolt 8,8 B Quantity: 1 Dim.: M8x30mm	
	Pos. 9 Name: Plain washer Quantity: 2 Dim.: ϕ 13 mm	Pos. 14 Name: Plain washer Quantity: 2 Dim.: ϕ 8,5 mm	



PPUH AUTO-HAK S.J.

Produkcja Haków Holowniczych
Henryk & Zbigniew Nejman
76-200 SŁUPSK ul. Słoneczna 16K
tel/fax (059) 8-414-414; 8-414-413
E-mail: office@autohak.com.pl
www. autohak.com.pl

Towing hitch (without electrical set)

Class: **A50-X** Cat. no. **H 14**

Designed for:

Manufacturer: **SKODA**

Model: **OCTAVIA II**

produced since 2004

Technical data:

D-value: **8,88 kN**

maximum trailer weight: **1600 kg**

maximum vertical cup load: **75 kg**

Approval number acc. to regulations EKG/ONZ 55.01: E20-55R-01 1499

Foreword

This towbar is design according to rules of safety traffic regulations. The towing hitch is a safety component and must be installed only by qualified personnel. Any alteration or conversion to the towinh hitch is prohibited and would lead to cancellation of design certification. Remove insulating compound and underseal from vehicle (if present) in the area of the matting surfaces of the towing hitch. The vehicle manufacturer's specifications regarding trailer load and max. vertical cup load are decisive for driving, and values for the towing hitch must not be exceeded.

D-value formula:

$$\frac{\text{Max trailer weight [kg]} \times \text{Max vehicle weight [kg]}}{\text{Max trailer weight [kg]} + \text{Max vehicle weight [kg]}} \times \frac{9,81}{1000} = D \text{ [kN]}$$